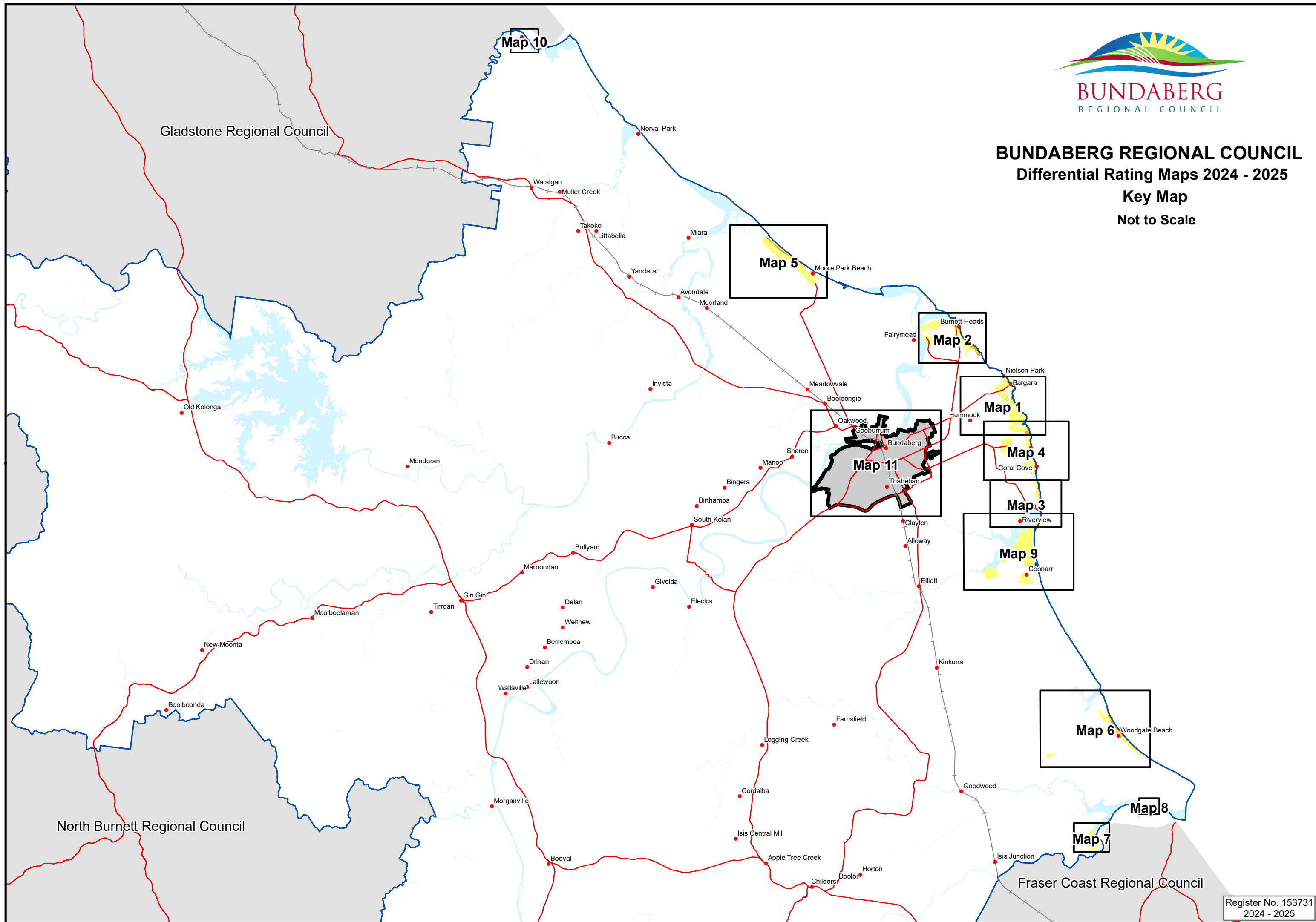




**BUNDABERG REGIONAL COUNCIL**  
**Differential Rating Maps 2024 - 2025**  
**Key Map**  
**Not to Scale**



**LEGEND**

- 5 Coastal Towns
- 7 Urban Oceanfront

**DISCLAIMER**

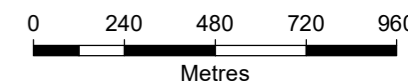
© The State of Queensland (Department of Environment and Resources Management) 2024. Based on Cadastral Data provided with the permission of the Department of Environment and Resource Management 2024. The information contained within this document is given without acceptance of responsibility for its accuracy. The Bundaberg Regional Council (and its officers, servants and agents), contract and agree to supply information only on that basis. The Department of Environment and Resource Management and the Bundaberg Regional Council gives no warranty in relation to the data (including accuracy, reliability, completeness or suitability) and accepts no liability (including without limitation, liability in negligence) for any loss, damage or costs (including consequential damage) relating to any use of the data.

**NOTES**

For more detail and an up to date Service Area, see Councils Interactive Mapping Application via the following link:

[Interactive Mapping](#)

or scan the below QR Code:

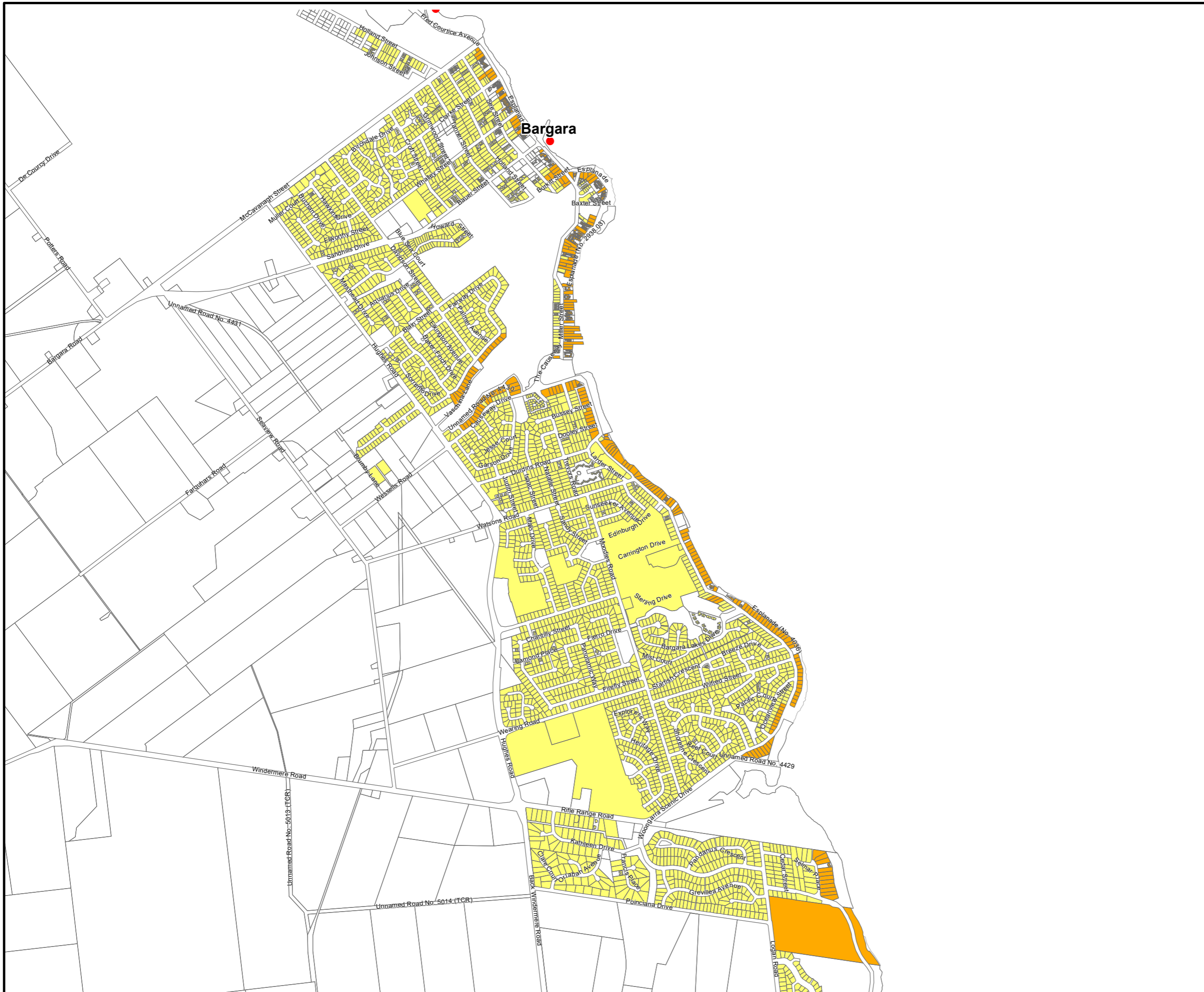


Scale 1:20,000

**DIFFERENTIAL RATING 2024-2025**

**Map No. 1**

Register No. 150730  
June, 2024





**LEGEND**

- 5 Coastal Towns
- 7 Urban Oceanfront

**DISCLAIMER**

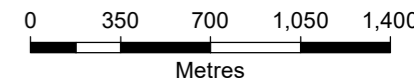
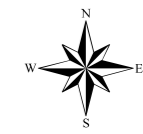
© The State of Queensland (Department of Environment and Resources Management) 2024. Based on Cadastral Data provided with the permission of the Department of Environment and Resource Management 2024. The information contained within this document is given without acceptance of responsibility for its accuracy. The Bundaberg Regional Council (and its officers, servants and agents), contract and agree to supply information only on that basis. The Department of Environment and Resource Management and the Bundaberg Regional Council gives no warranty in relation to the data (including accuracy, reliability, completeness or suitability) and accepts no liability (including without limitation, liability in negligence) for any loss, damage or costs (including consequential damage) relating to any use of the data.

**NOTES**

For more detail and an up to date Service Area, see Councils Interactive Mapping Application via the following link:

[Interactive Mapping](#)

or scan the below QR Code:



Scale 1:29,453

**DIFFERENTIAL RATING 2024-2025**

**Map No. 2**

Register No. 150732  
June, 2024



**LEGEND**

- 5 - Coastal Towns
- 7 - Urban Oceanfront

**DISCLAIMER**

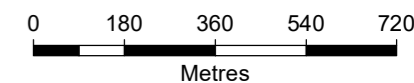
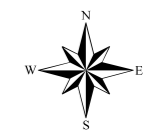
© The State of Queensland (Department of Environment and Resources Management) 2024. Based on Cadastral Data provided with the permission of the Department of Environment and Resource Management 2024. The information contained within this document is given without acceptance of responsibility for its accuracy. The Bundaberg Regional Council (and its officers, servants and agents), contract and agree to supply information only on that basis. The Department of Environment and Resource Management and the Bundaberg Regional Council gives no warranty in relation to the data (including accuracy, reliability, completeness or suitability) and accepts no liability (including without limitation, liability in negligence) for any loss, damage or costs (including consequential damage) relating to any use of the data.

**NOTES**

For more detail and an up to date Service Area, see Councils Interactive Mapping Application via the following link:

[Interactive Mapping](#)

or scan the below QR Code:



Scale 1:15,000

**DIFFERENTIAL  
RATING  
2024-2025**

**Map No. 3**

Register No. 150733  
June, 2024





**LEGEND**

- 5 - Coastal Towns
- 7 - Urban Oceanfront

**DISCLAIMER**

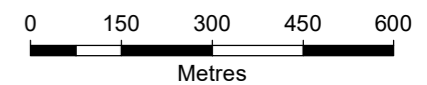
© The State of Queensland (Department of Environment and Resources Management) 2024. Based on Cadastral Data provided with the permission of the Department of Environment and Resource Management 2024. The information contained within this document is given without acceptance of responsibility for its accuracy. The Bundaberg Regional Council (and its officers, servants and agents), contract and agree to supply information only on that basis. The Department of Environment and Resource Management and the Bundaberg Regional Council gives no warranty in relation to the data (including accuracy, reliability, completeness or suitability) and accepts no liability (including without limitation, liability in negligence) for any loss, damage or costs (including consequential damage) relating to any use of the data.

**NOTES**

For more detail and an up to date Service Area, see Councils Interactive Mapping Application via the following link:

[Interactive Mapping](#)

or scan the below QR Code:



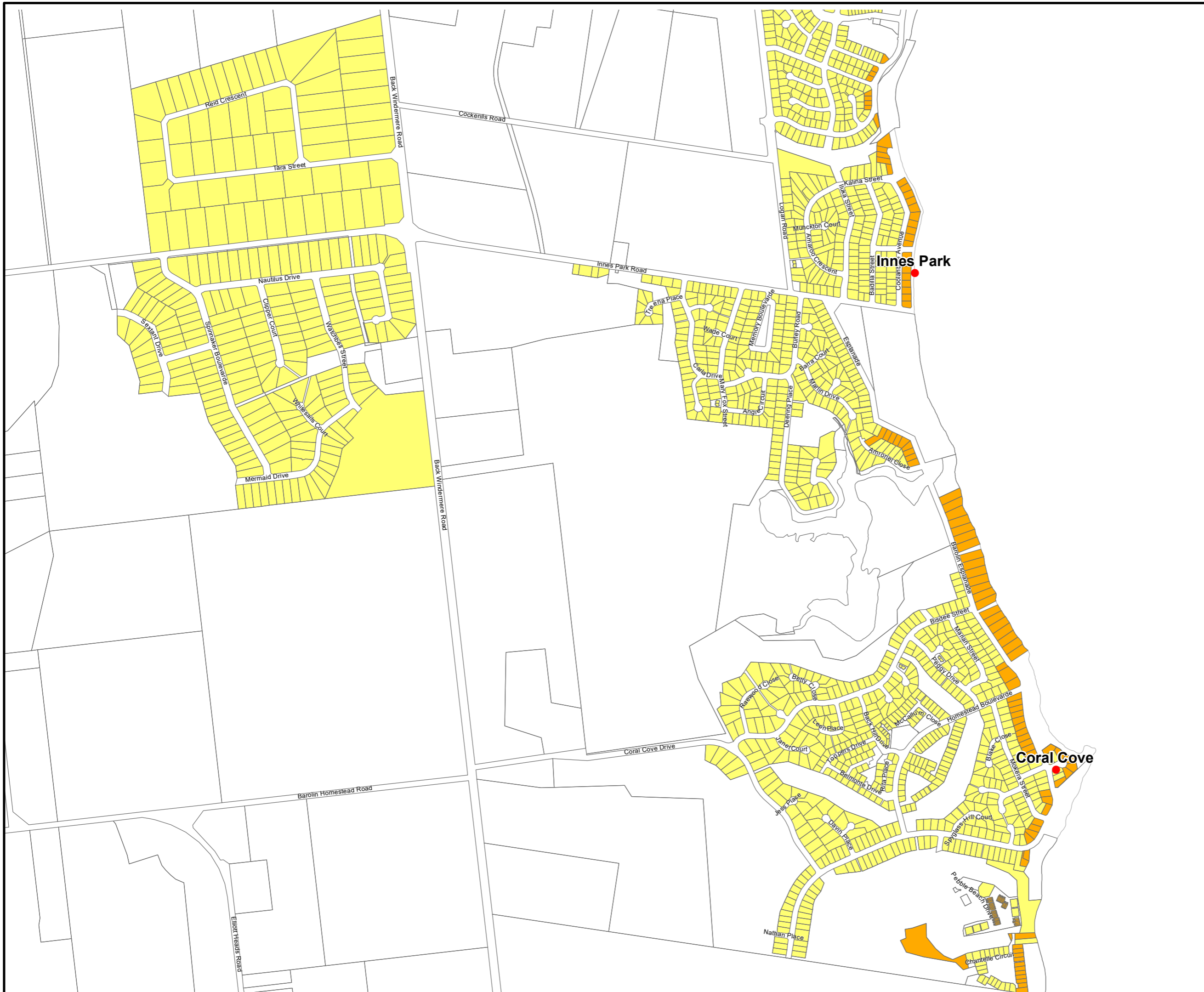
Scale 1:12,500

**DIFFERENTIAL RATING 2024-2025**

**Map No. 4**

Register No. 150734

June, 2024





**LEGEND**

- 5 - Coastal Towns
- 7 - Urban Oceanfront

**DISCLAIMER**

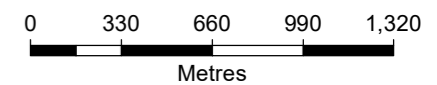
© The State of Queensland (Department of Environment and Resources Management) 2024. Based on Cadastral Data provided with the permission of the Department of Environment and Resource Management 2024. The information contained within this document is given without acceptance of responsibility for its accuracy. The Bundaberg Regional Council (and its officers, servants and agents), contract and agree to supply information only on that basis. The Department of Environment and Resource Management and the Bundaberg Regional Council gives no warranty in relation to the data (including accuracy, reliability, completeness or suitability) and accepts no liability (including without limitation, liability in negligence) for any loss, damage or costs (including consequential damage) relating to any use of the data.

**NOTES**

For more detail and an up to date Service Area, see Councils Interactive Mapping Application via the following link:

[Interactive Mapping](#)

or scan the below QR Code:



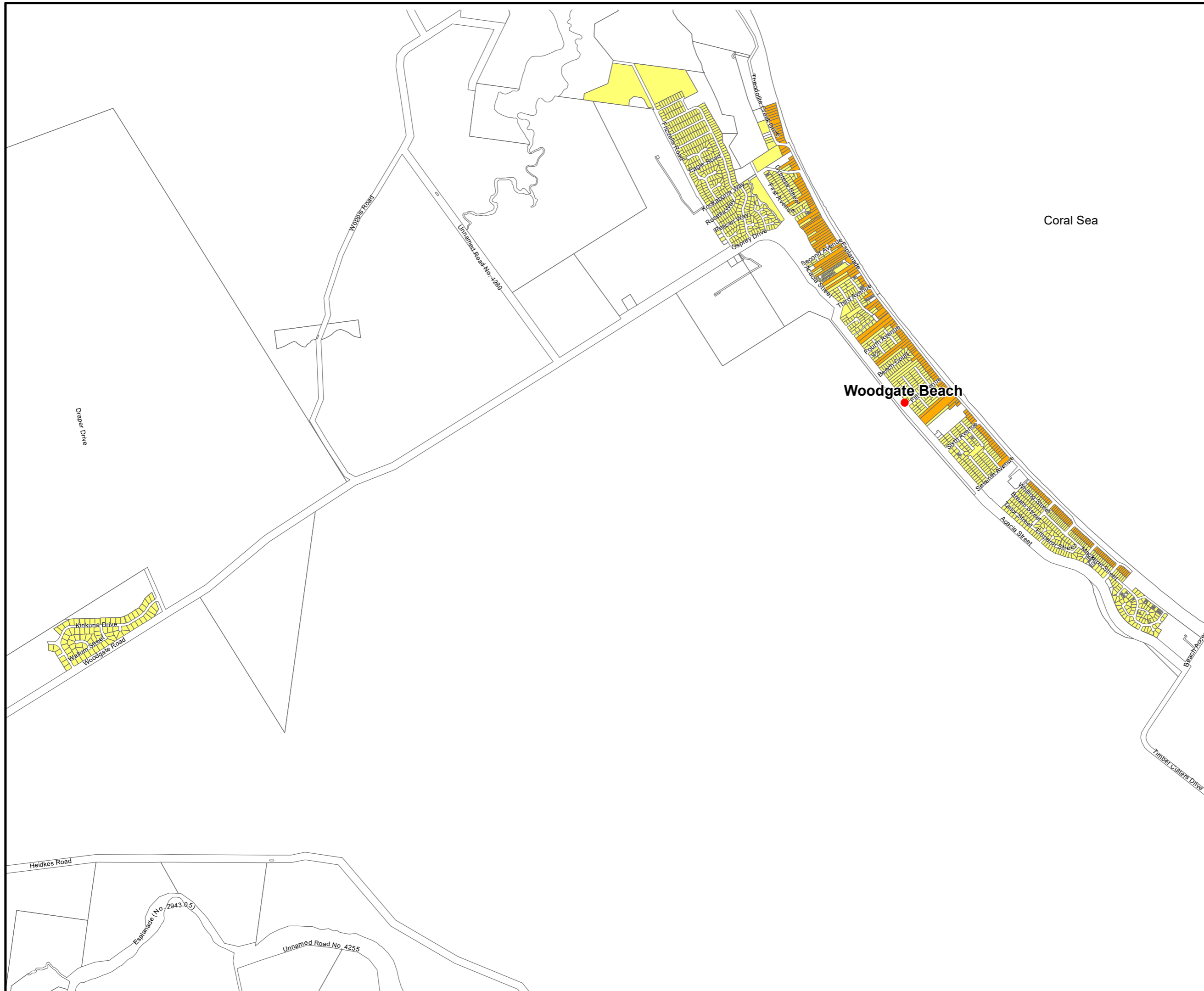
Scale 1:27,500

**DIFFERENTIAL RATING 2024-2025**

**Map No. 6**

Register No. 150736

June, 2024





**LEGEND**

- 5 - Coastal Towns
- 7 - Urban Oceanfront

**DISCLAIMER**

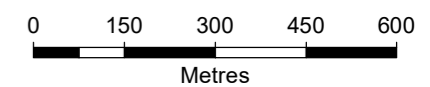
© The State of Queensland (Department of Environment and Resources Management) 2024. Based on Cadastral Data provided with the permission of the Department of Environment and Resource Management 2024. The information contained within this document is given without acceptance of responsibility for its accuracy. The Bundaberg Regional Council (and its officers, servants and agents), contract and agree to supply information only on that basis. The Department of Environment and Resource Management and the Bundaberg Regional Council gives no warranty in relation to the data (including accuracy, reliability, completeness or suitability) and accepts no liability (including without limitation, liability in negligence) for any loss, damage or costs (including consequential damage) relating to any use of the data.

**NOTES**

For more detail and an up to date Service Area, see Councils Interactive Mapping Application via the following link:

[Interactive Mapping](#)

or scan the below QR Code:

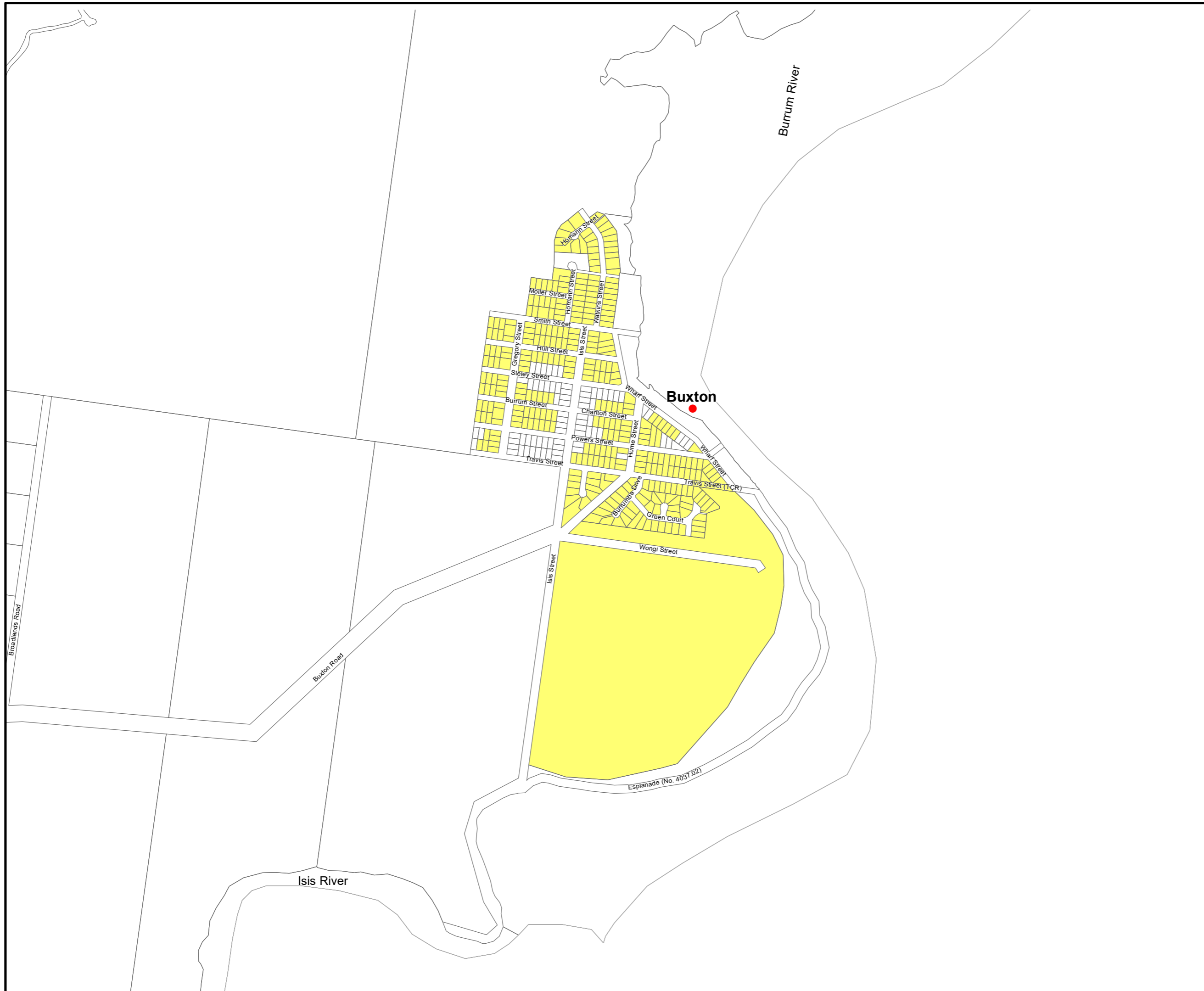


Scale 1:12,500

**DIFFERENTIAL RATING 2024-2025**

**Map No. 7**

Register No. 150737  
June, 2024





**LEGEND**

- 5 - Coastal Towns
- 7 - Urban Oceanfront

**DISCLAIMER**

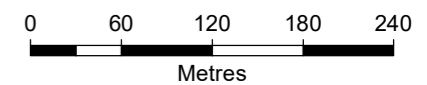
© The State of Queensland (Department of Environment and Resources Management) 2024. Based on Cadastral Data provided with the permission of the Department of Environment and Resource Management 2024. The information contained within this document is given without acceptance of responsibility for its accuracy. The Bundaberg Regional Council (and its officers, servants and agents), contract and agree to supply information only on that basis. The Department of Environment and Resource Management and the Bundaberg Regional Council gives no warranty in relation to the data (including accuracy, reliability, completeness or suitability) and accepts no liability (including without limitation, liability in negligence) for any loss, damage or costs (including consequential damage) relating to any use of the data.

**NOTES**

For more detail and an up to date Service Area, see Councils Interactive Mapping Application via the following link:

[Interactive Mapping](#)

or scan the below QR Code:



Scale 1:5,000

**DIFFERENTIAL RATING 2024-2025**

**Map No. 8**

Register No. 150738  
June, 2024



**LEGEND**

- 5 - Coastal Towns
- 7 - Urban Oceanfront

**DISCLAIMER**

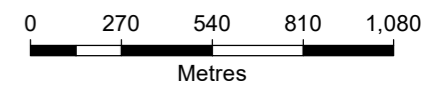
© The State of Queensland (Department of Environment and Resources Management) 2024. Based on Cadastral Data provided with the permission of the Department of Environment and Resource Management 2024. The information contained within this document is given without acceptance of responsibility for its accuracy. The Bundaberg Regional Council (and its officers, servants and agents), contract and agree to supply information only on that basis. The Department of Environment and Resource Management and the Bundaberg Regional Council gives no warranty in relation to the data (including accuracy, reliability, completeness or suitability) and accepts no liability (including without limitation, liability in negligence) for any loss, damage or costs (including consequential damage) relating to any use of the data.

**NOTES**

For more detail and an up to date Service Area, see Councils Interactive Mapping Application via the following link:

[Interactive Mapping](#)

or scan the below QR Code:

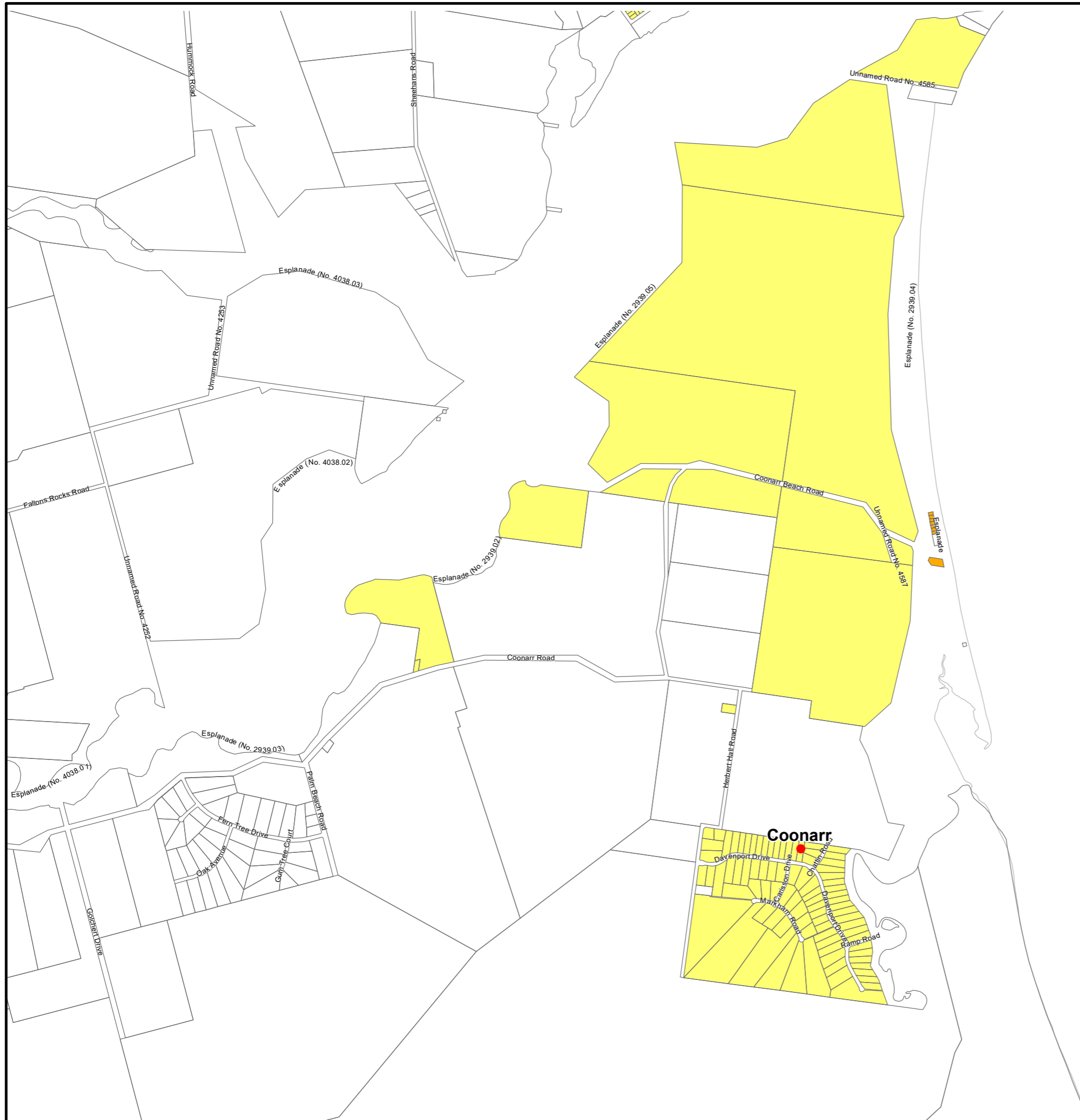


Scale 1:22,500

**DIFFERENTIAL RATING 2024-2025**

**Map No. 9**

Register No. 150739  
June, 2024



**LEGEND**

- 5 - Coastal Towns
- 7 - Urban Oceanfront

**DISCLAIMER**

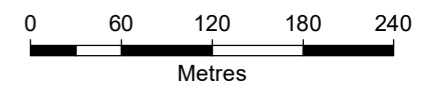
© The State of Queensland (Department of Environment and Resources Management) 2024. Based on Cadastral Data provided with the permission of the Department of Environment and Resource Management 2024. The information contained within this document is given without acceptance of responsibility for its accuracy. The Bundaberg Regional Council (and its officers, servants and agents), contract and agree to supply information only on that basis. The Department of Environment and Resource Management and the Bundaberg Regional Council gives no warranty in relation to the data (including accuracy, reliability, completeness or suitability) and accepts no liability (including without limitation, liability in negligence) for any loss, damage or costs (including consequential damage) relating to any use of the data.

**NOTES**

For more detail and an up to date Service Area, see Councils Interactive Mapping Application via the following link:

[Interactive Mapping](#)

or scan the below QR Code:

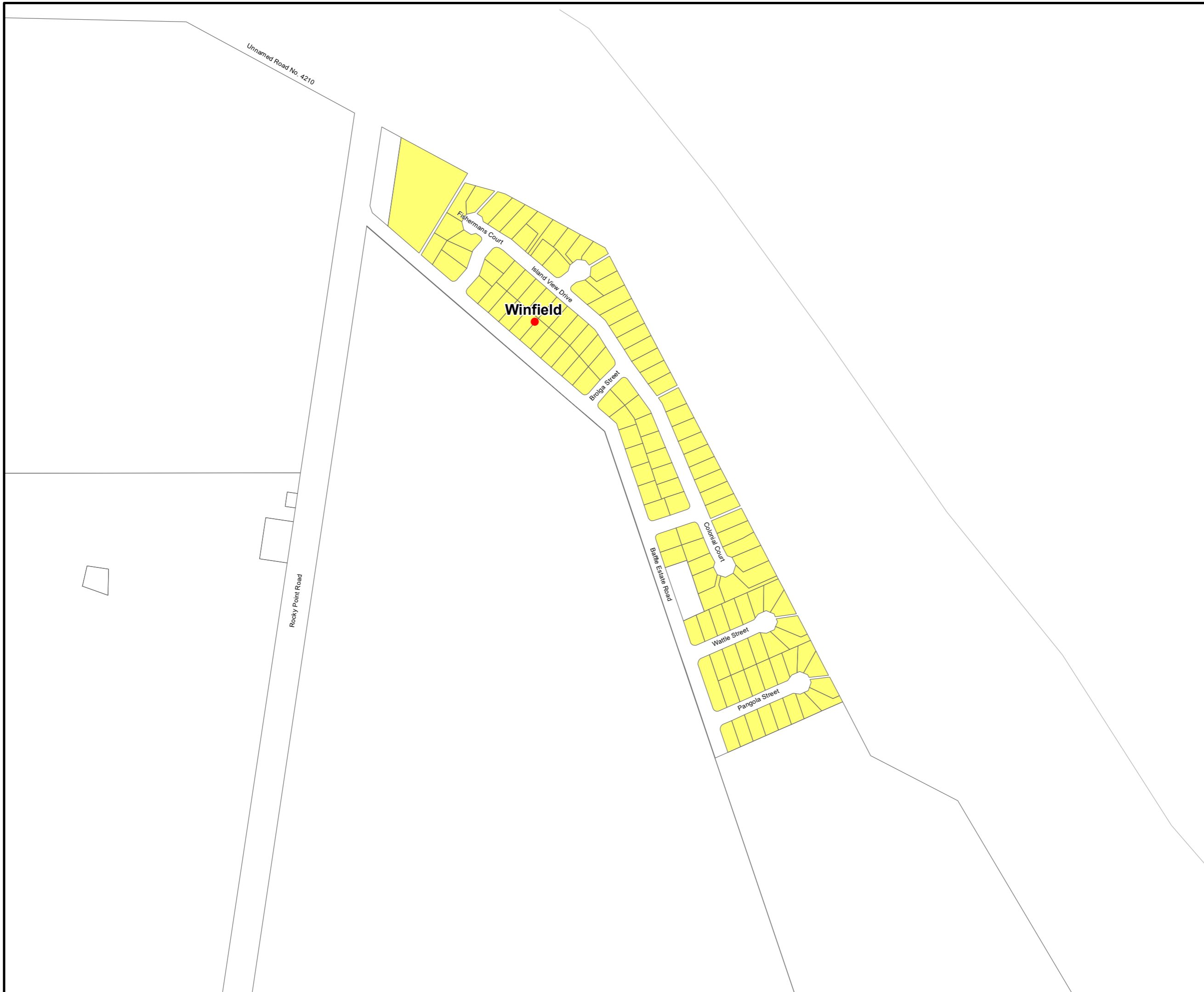


Scale 1:5,000

**DIFFERENTIAL RATING 2024-2025**

**Map No. 10**

Register No. 150740  
June, 2024





**LEGEND**

- 12 Bundaberg Commercial
- Bundaberg Commercial Area

**DISCLAIMER**

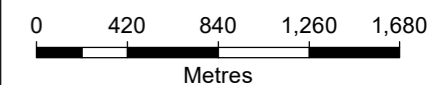
© The State of Queensland (Department of Environment and Resources Management) 2024. Based on Cadastral Data provided with the permission of the Department of Environment and Resource Management 2024. The information contained within this document is given without acceptance of responsibility for its accuracy. The Bundaberg Regional Council (and its officers, servants and agents), contract and agree to supply information only on that basis. The Department of Environment and Resource Management and the Bundaberg Regional Council gives no warranty in relation to the data (including accuracy, reliability, completeness or suitability) and accepts no liability (including without limitation, liability in negligence) for any loss, damage or costs (including consequential damage) relating to any use of the data.

**NOTES**

For more detail and an up to date Service Area, see Councils Interactive Mapping Application via the following link:

[Interactive Mapping](#)

or scan the below QR Code:



Scale 1:35,000

**DIFFERENTIAL  
RATING  
2024-2025**

**Map No. 11**

Register No. 150741  
June, 2024

