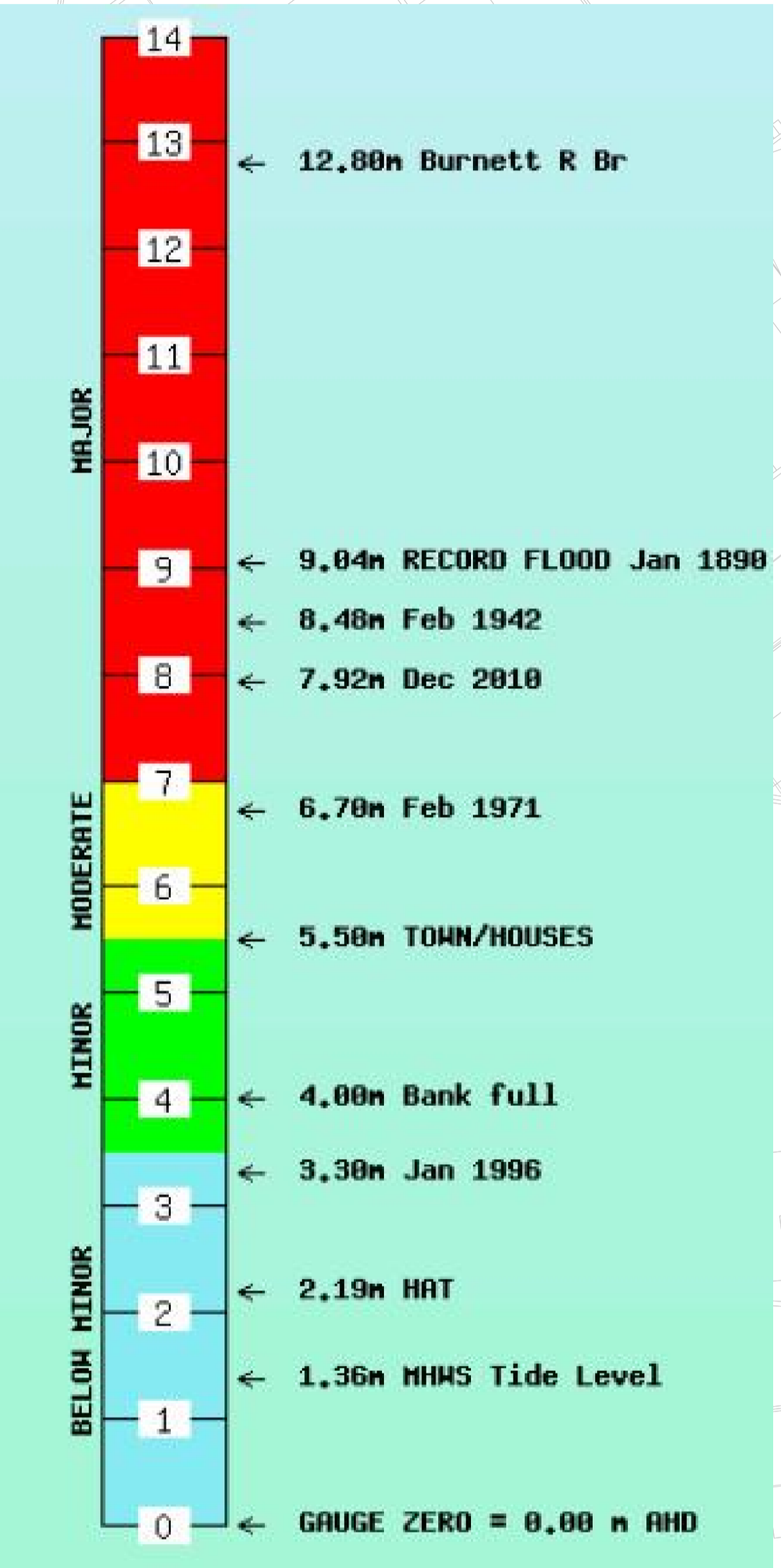
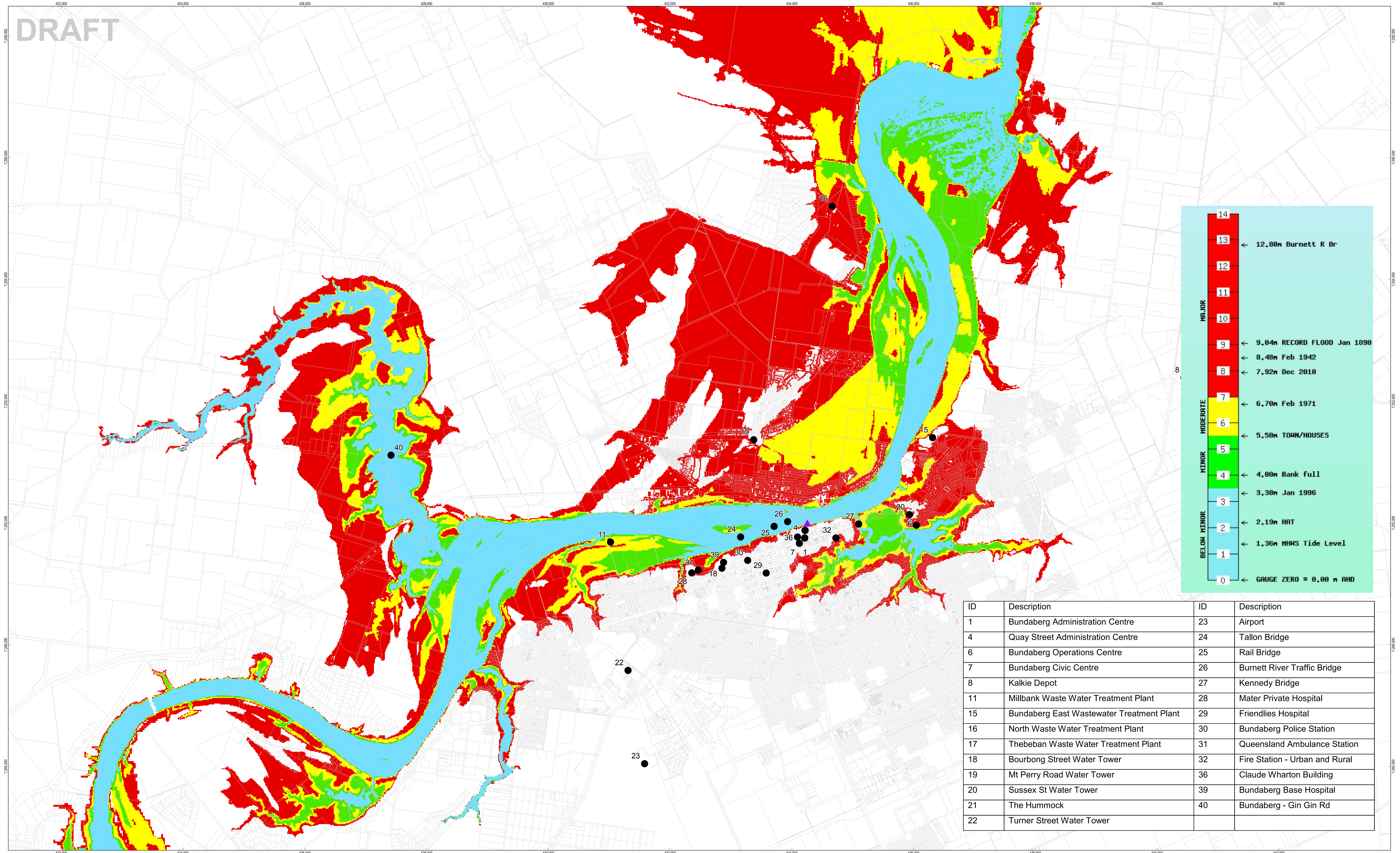
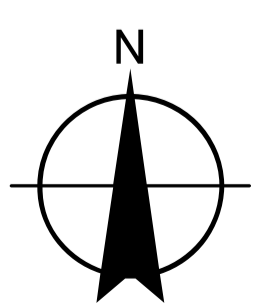


DRAFT



ID	Description	ID	Description
1	Bundaberg Administration Centre	23	Airport
4	Quay Street Administration Centre	24	Tallon Bridge
6	Bundaberg Operations Centre	25	Rail Bridge
7	Bundaberg Civic Centre	26	Burnett River Traffic Bridge
8	Kalkie Depot	27	Kennedy Bridge
11	Millbank Waste Water Treatment Plant	28	Mater Private Hospital
15	Bundaberg East Wastewater Treatment Plant	29	Friendlies Hospital
16	North Waste Water Treatment Plant	30	Bundaberg Police Station
17	Thebeban Waste Water Treatment Plant	31	Queensland Ambulance Station
18	Bourbon Street Water Tower	32	Fire Station - Urban and Rural
19	Mt Perry Road Water Tower	36	Claude Wharton Building
20	Sussex St Water Tower	39	Bundaberg Base Hospital
21	The Hummock	40	Bundaberg - Gin Gin Rd
22	Turner Street Water Tower		

1:20,000 @ A0
 0 1 2
 Kilometres
 Map Projection: Universal Transverse Mercator
 Horizontal Datum: GDA 1994
 Grid: GDA 1994 MGA Zone 56



LEGEND
 ● Critical Infrastructure
 ▲ Bundaberg Gauge
 □ Cadastre
Flood Classification Levels
 0 - 3.5m Below Minor
 3.5 - 5.5m Minor
 5.5 - 7m Moderate
 >7m Major

Department of Natural Resources and Mines (DNRM) makes no representations or warranties about the accuracy, reliability, completeness, or suitability for any particular purpose of the data. By using the data you agree that DNRM is under no liability for any loss or damage (including consequential damage) that you may suffer from use of the data. Further, you agree to continually indemnify the State of Queensland and DNRM and their officers and employees against any loss, cost, expense, damage and liability of any kind (including consequential damage) arising directly or indirectly from or related to any claim relating to your use of the data or any product made from the data.
 Department of Natural Resources and Mines © State of Queensland 2013



Bundaberg Regional Council
 Burnett River Flood Study

Job Number 41-24728
 Revision A
 Date 23 Sep 2013

Different Stages of January 2013
 Flood with BoM Flood Classifications

Figure 3

145 Ann Street Brisbane QLD 4000 Australia T 61 7 3316 3000 F 61 7 3316 3333 E bnm@mail.ghd.com W www.ghd.com

G:\41\24728\GIS\Map\Deliverables\Public_Information_Session\41-24728_BOM_WarningClass_rev_a.mxd
 © 2013. Whilst every care has been taken to prepare this map, GHD (and DNRM) make no representations or warranties about its accuracy, reliability, completeness or suitability for any particular purpose and cannot accept liability and responsibility of any kind (whether in contract, tort or otherwise) for any expenses, losses, damages and/or costs (including indirect or consequential damage) which are or may be incurred by any party as a result of the map being inaccurate, incomplete or unsuitable in any way and for any reason.
 Data source: GHD: Flood classification levels/2013, Critical Infrastructure/2013, DNRM: Cadastre/2012, Locality/2009. Created by LSabbag