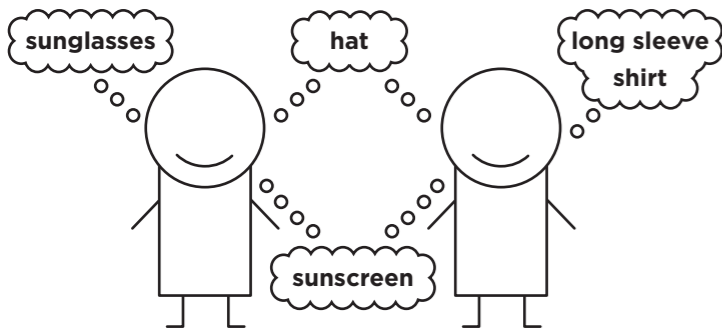


Garden Kids

DECEMBER & JANUARY 2020/21

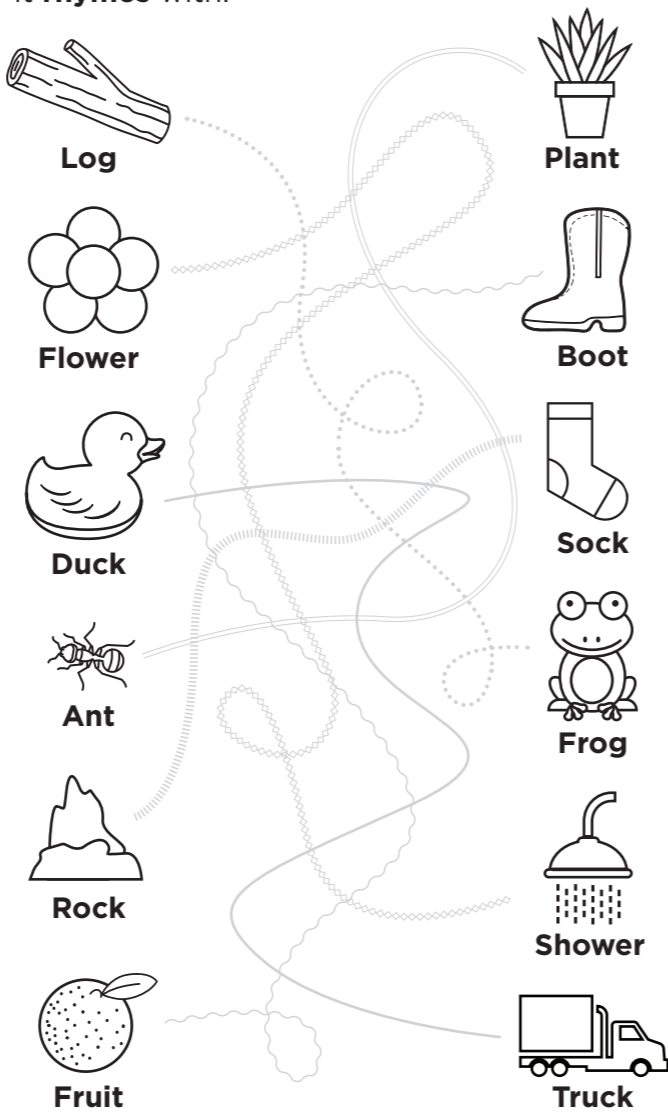
It's **summer** in the Gardens, can you help Casey and Lilly dress for a walk in the Gardens?



Look for **Grevillea** [gree-vill-ee-ah] **Cooroora** [coo-roo-rah] **Cascade** [cas-cay-duh] near Hinkler Hall of Aviation with its beautiful yellow flowers. Can you **write the word flower** by filling in the missing letters?

f l o w e r
 _ l o w e r
 _ _ o w e r
 _ _ _ w e r
 _ _ _ _ e r
 _ _ _ _ _ r

Here are **6 things** you might see on a walk in the gardens. **Trace the line** to the picture it **rhymes** with.



Christmas spiders live all over Australia including here in the Gardens.

You can see them in summer near Christmas time as they are now adults and easier to spot.

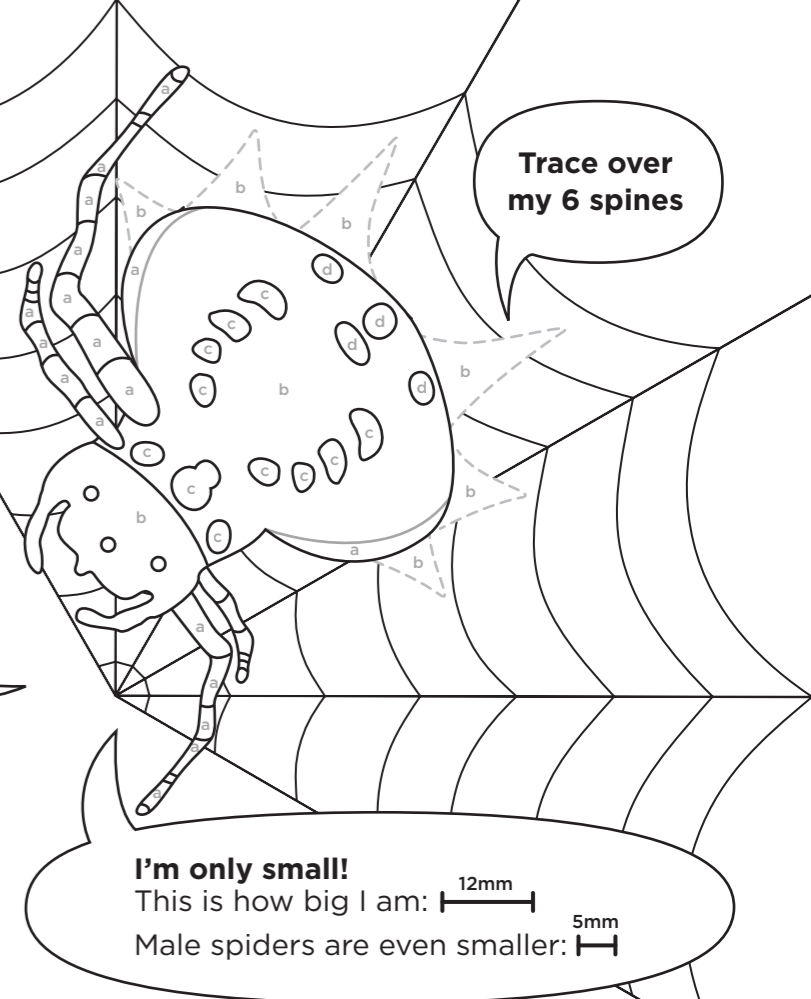
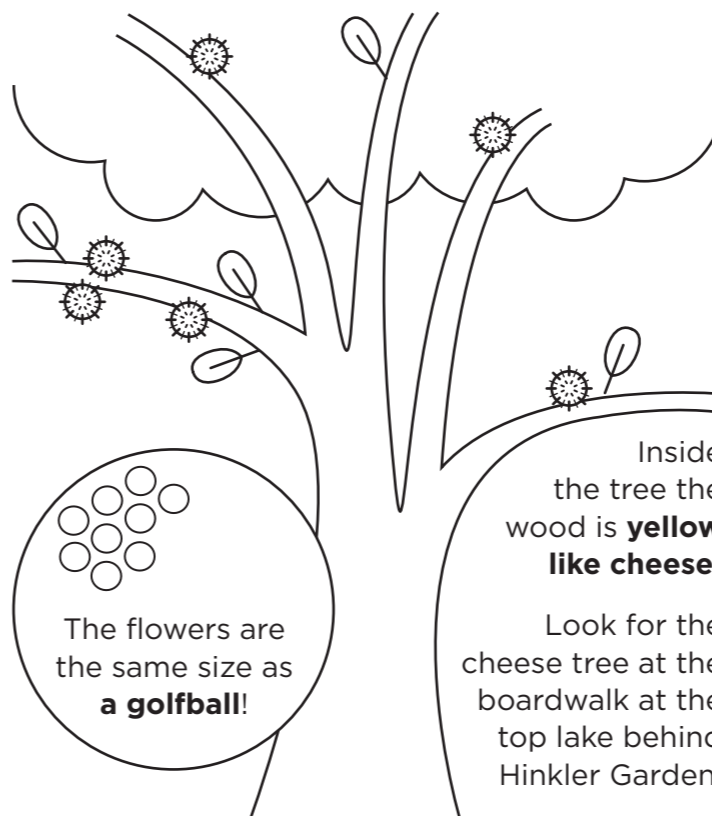
Spiders have **8 legs**, but our spider only has 4! Can you **draw 4 more legs**?

Colour in the spider using the letters to help you.

- a = orange
- b = black
- c = white
- d = yellow

Christmas spiders have **8 eyes**. Our spider only has 3, can you **draw 5 more eyes** for her?

Say cheese! **Draw more round orange flowers** on the Yellow Cheesewood Tree.



I'm only small!
 This is how big I am: 12mm
 Male spiders are even smaller: 5mm

The word spider starts with 'S'. Can you **find and circle the letter 'S'**?

H S s R a
 s P E S s
 S t M s J

Help our hungry Christmas spider get to her fly snack by **drawing a line from 1 to 10**.

	7	5	9	3
1	2	3	6	8
10	5	4	9	10
2	6	7	8	

We know it's summer when the **Ivory Curl tree** flowers. Flowers can grow up to 30cm long! Can you spot these creamy white flowers in the Gardens? **Measure your hand**, how long is it? Can you **finish adding in** closed and open flowers?

