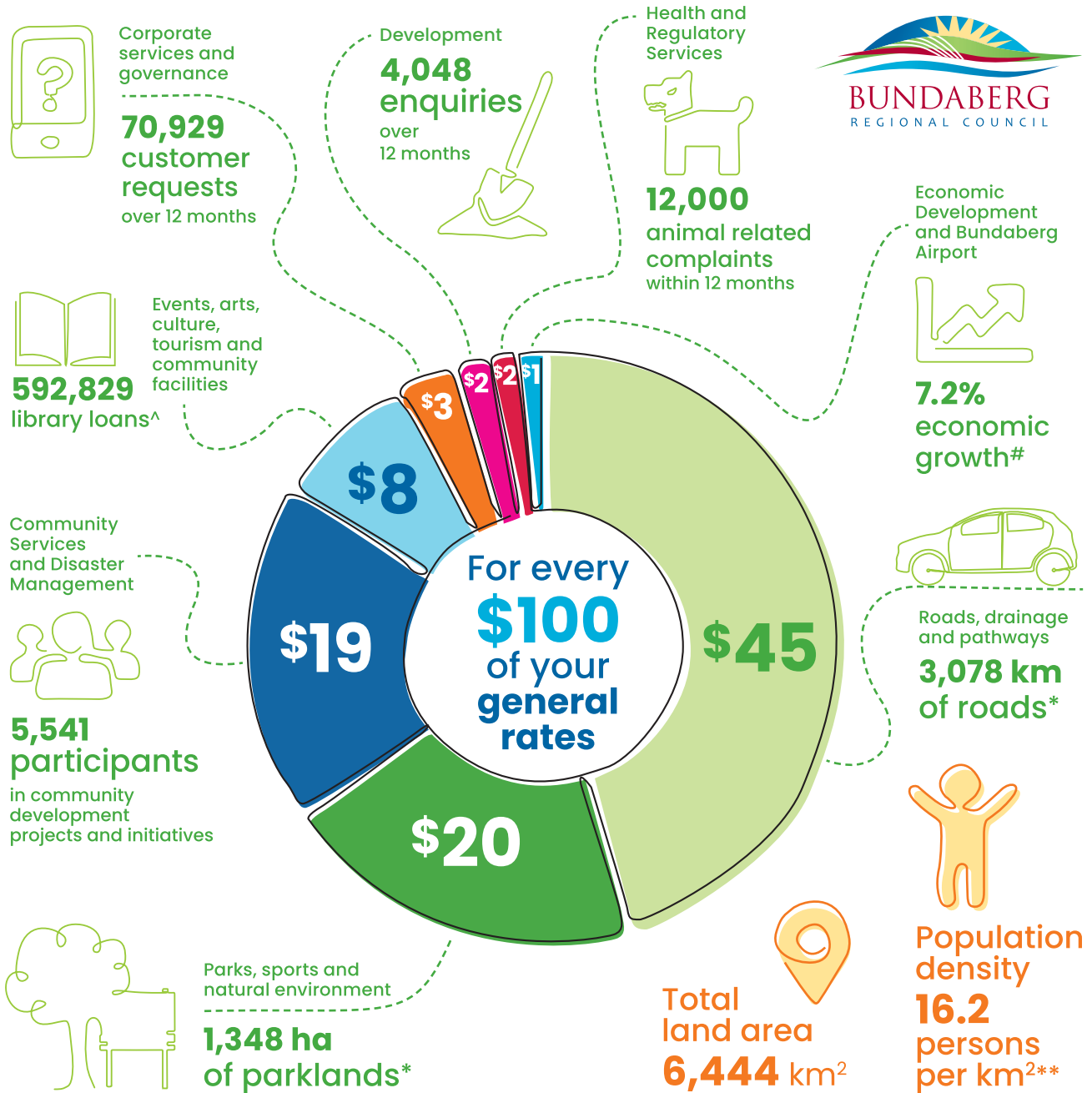
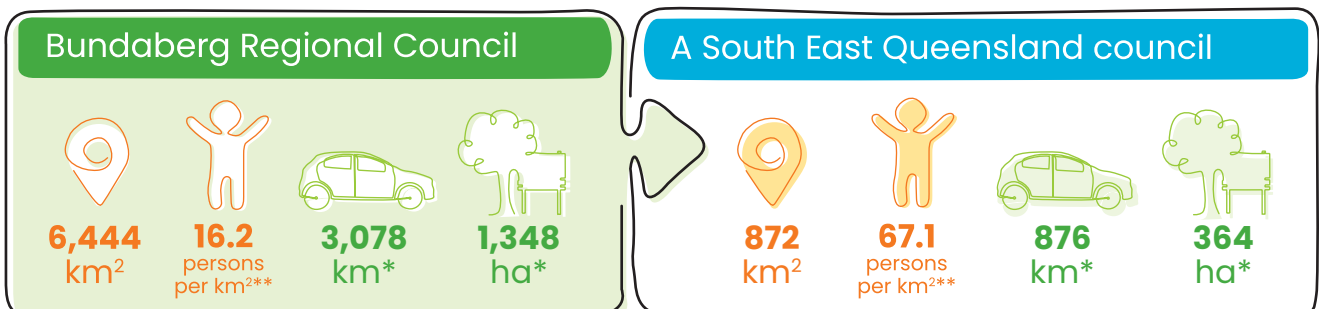


# Where do your general rates go?



## How do we compare?

It is difficult to make a meaningful comparison between one Council's rates and another's. There are so many unique factors which make up our communities.



\*2022-23 data from <https://www.statedevelopment.qld.gov.au/local-government/for-councils/resources/local-government-comparative-reports>  
 \*\*Source: <https://www.abs.gov.au/> ^Of physical and digital items in 2023 #Source: <https://economy.id.com.au/bundaberg/gross-regional-product>