

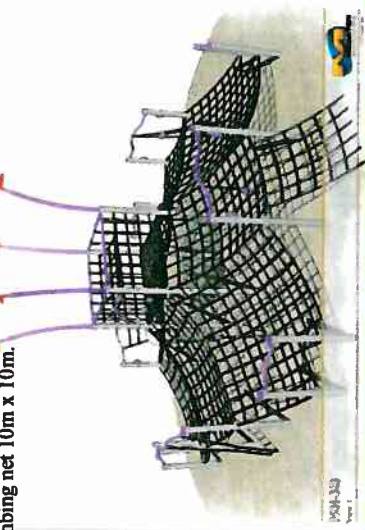


1. SUGAR CANE TRAIN AND SUGAR MILL: Nurturing the Bundaberg Regions proud history of Sugar Cane growing and milling. The Train and Mill offer educational role play along with great fun while creating a unique point of difference that fits with our

2. SUGAR CANE MAZE: Simulated Sugar Cane Maze allows visitors of all ages and abilities the thrill of 'getting lost'. The maze is wheelchair accessible and likens the old days of playing in the sugar cane fields. The tactile elements such as the soft squeeze panels. Hand painted brush strokes, machined plastic cane sticks and smooth stainless steel mirrors are used to stimulate senses for visually impaired and/or severely handicapped people.



3. TARANTULA CLIMBING NET: Large wheelchair accessible climbing net 10m x 10m.



4. SWINGS: 3 bay Swing



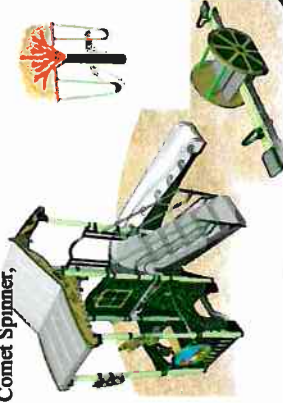
5. LIBERTY SWING: Specifically designed for people with a disability and in wheelchairs. The swing is operated by use of a MLAK key which can be collected from the Bundaberg Regional Council Office in Bourbong St, the Toy Library, and some Special care facilities.



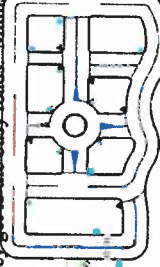
6. TODDLER PLAY AREA: Special fully fenced area for toddlers away from larger children. Area includes junior play fort with dual slides and includes its own shelter shed for mum, dad or carers. Shelter shed fitted with wheelchair accessible bench.



7. BUSH KIDS PLAY AREA: Pioneer themed zone including a Tree Swing, Play Fort, Comet Spinner, Gyro Spinner and Wagon Wheel Rocker.



8. BICYCLE SAFETY TRAINING COURSE: designed with the assistance of the Queensland Department of Transport to teach children the road rules at an early age before they get to the busy roads...Mums and dads can teach their children privately or organized school groups can also access this facility.
*All signage for this facility was generously donated by RACQ.



9. FUTURE - BICYCLE SKILLS COURSE: Advanced course to build important skills such as balance, coordination and fitness as riders manoeuvre around the course. Obstacles include:



Lake Ellen Heritage Hub Visitors Map

Baldwin Swamp,
George Street, East Bundaberg



This project is supported by funding from the Australian Government, the Queensland Government through the Department of Premier and Cabinet, the Bundaberg Regional Council and the community of Bundaberg

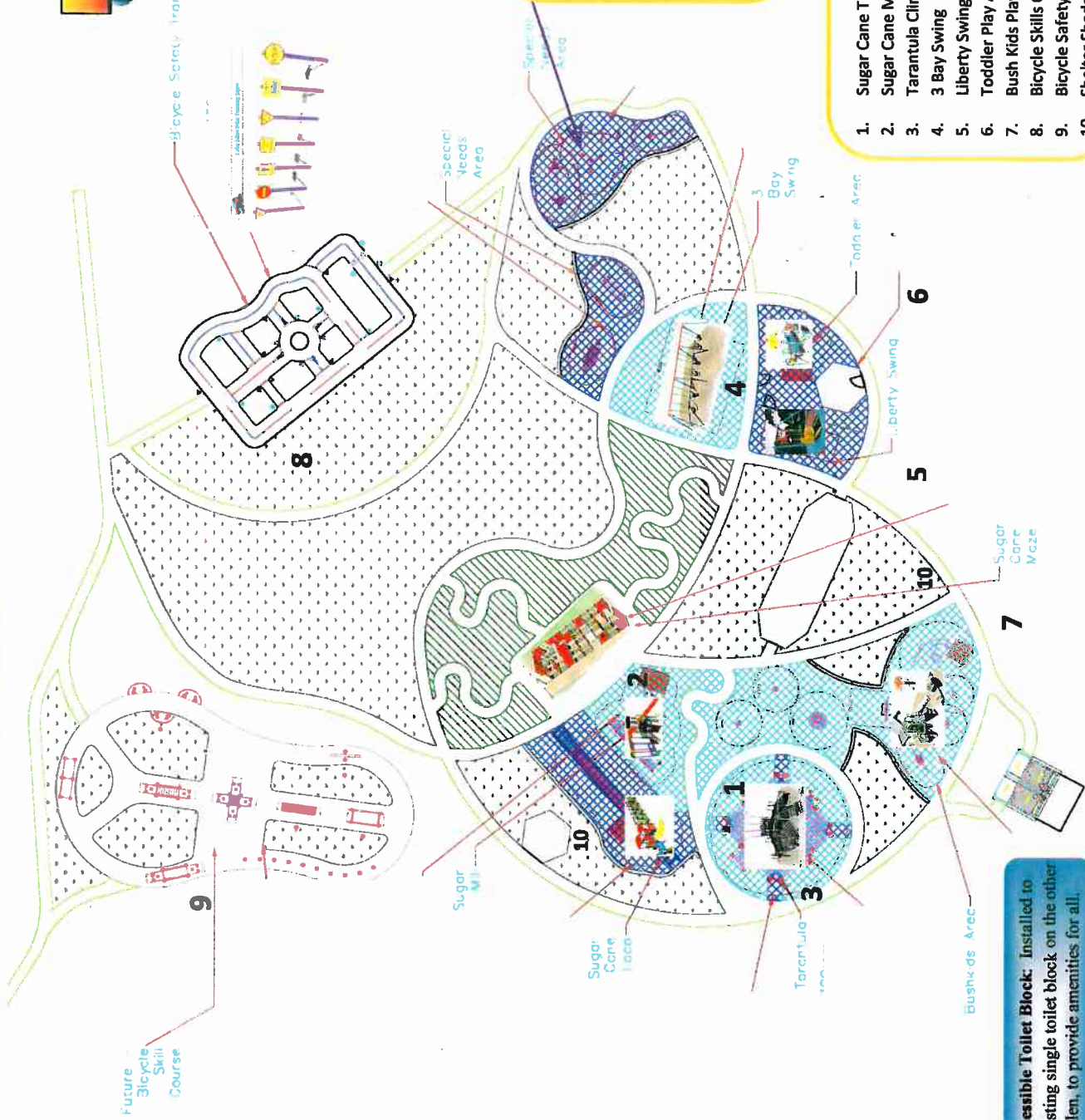


PATHWAYS: Meandering paths give added interest with many different routes possible to reach a destination. Winding path systems are used to give a sense of journey and spur curiosity. They are also a great mobility exercise for less mobile people.

10. SHELTER SHEDS
Hexagonal shelter sheds: approx. 30m².

Main Shelter Shed: is approx. 100m² constructed on a raised mound for supervision of the grounds. Housing eight wheelchair accessible table and bench seat sets, the shed is designed for the larger groups as well as mums, dads and children.
*Donated by Bundaberg Master Homes.

Wheelchair Accessible Toilet Block: Installed to compliment the existing single toilet block on the other side of Lake Ellen, to provide amenities for all.



REHABILITATION AREA: Designed a community support worker, Lindy Muller, this area will help people recover through exercise who have suffered a stroke, other illness or injuries that require rehabilitation. The equipment has been coloured so to not look like play equipment and give dignity to adults using the purpose built equipment.

1. Sugar Cane Train & Sugar Mill
2. Sugar Cane Maze
3. Tarantula Climbing Net
4. 3 Bay Swing
5. Liberty Swing
6. Toddler Play Area
7. Bush Kids Play Area
8. Bicycle Skills Course
9. Bicycle Safety Training Course – Stage 2
10. Shelter Sheds