



BUNDABERG
REGIONAL COUNCIL

**Bundaberg Regional Council
Local Disaster Management
Group
Tsunami Response Plan**

Table of Contents

<i>Introduction</i>	3
The risk from tsunami	3
Purpose	3
National tsunami warnings	5
Sequence of watches and warnings	6
Tsunami warning products	7
Queensland’s processes to manage JATWC warning products	9
References	9
<i>Tsunami Risk Considerations</i>	10
Tsunami potential consequences– vulnerable communities and infrastructure	10
<i>Awareness and Capacity Building</i>	13
Community education	13
Training and exercises	13
Community resilience measures	13
<i>Response Strategy</i>	14
Warning notification and dissemination	14
Warning Methods	17
Standard messages to the community	18
Concept of operations	18
Roles and Responsibilities.....	18
Levels of activation	21
Disaster declaration.....	21
Evacuation	22
Agency plans.....	22
<i>Annexures</i>	22

Introduction

The risk from tsunami

Bundaberg Regional Council Coastline

The risk to the Bundaberg Regional Council coastal communities from a tsunami event is *still being assessed*. Recent events, however, have shown that, even if tsunamis occur infrequently, their effect can be catastrophic.

The Bundaberg Regional Council has a coastline of approx 100km, with 18 communities located along the coastline. There are a total of over 19,000 people living in those communities.

The Australian Government Agency, Geoscience Australia, in its professional opinion of “A nearshore tsunami hazard assessment for Australia”, using the Probabilistic Tsunami Hazard Assessment (PTHA) and the Nearshore Tsunami Hazard Assessment (NTHA) has identified the Bundaberg coastline as one of the three most probable areas in Queensland to be affected by a tsunami.

Ratings are based on a one in two thousand year return period wave heights at 100 metres depth (PTHA rank), compared with rankings based on the wave heights obtained by multiplying the PTHA wave height by the NTHA amplification factor at 20 metre water depth.

Due to the undersea topography, the influence of Fraser Island and that the coastline is not protected by the Great Barrier Reef, the NTHA predicts that there would be an amplification factor for the Bundaberg coastline of 0.6 – 0.9.

The Bureau of Meteorology advice in its land inundation warnings is for people to move at least ten metres above sea level or at least one kilometre away from all beaches and the waters edge of harbours and coastal estuaries.

There are significant proportions of the coastline where communities are adjacent to a rocky coastline, or the land raises steeply up from the shoreline to a height of approximately 5 metres AHD (Australian Height Datum). Due to the settlement pattern as a result of the foreshore topography, the land inundation warning area is derived from a combination of the 10 metre contour line, vulnerable areas below 6.0m AHD and properties located within 2 km from the shoreline.

People living or working in areas potentially affected by a tsunami, need to know that they should move to safer areas if a tsunami warning affecting them is issued.

The risk from tsunami - Adjoining LGAs.

Gladstone Regional Council

Bundaberg Regional Council’s northern coastal boundary with Gladstone Regional Council is Baffle Creek. North of the boundary on the coastline (in Gladstone Regional Council) are the villages of Baffle Creek and Rules Beach, the township of Agnes Water and the Town of 1770. There are also quite a number of rural residential subdivisions which maybe subject to inundation from a Tsunami.

Between Rules Beach and Agnes Water is Deepwater National Park covering an area of 4730 hectares and is popular for fishing and camping. Camping grounds exist at Flat Rock and Middle Rock with Wreck Rock being a known fishing location.



Round Hill Creek with its mouth at the Town of 1770 is a natural barrier for connecting roads to the north directly to Gladstone. Residents in coastal communities between Baffle Creek and Round Hill have the option of travelling to the west along Fingerboard Road (which is subject in a number of places to flooding) to the township of Miriam Vale and then north on the Bruce Highway to Gladstone.

Alternately, residents in this region can travel south on Tablelands Road and then Bundaberg/Lowmead Road to Bundaberg. Travel times and distance to both centres is approximately 1.40 hours and 125 kilometres. Due to terrain, residents in this region are serviced by Bundaberg media. Road conditions and avoidance of the Bruce Highway encourages the majority of residents to travel to Bundaberg. Transport facilities in both centres are comparable however with Bundaberg being closer to Brisbane, residents use Bundaberg as their departure destination when travelling south. Bundaberg with a larger population has more commercial and retail facilities than Gladstone.

All of the above contribute to residents north of the boundary to Agnes Water and Town of 1770 treating Bundaberg as its Regional Centre. During natural disasters, residents of this part of Gladstone Regional Council rely on Bundaberg as the centre for support and assistance.

This reliance on Bundaberg could see an additional 5-6000 persons impacting on its resources and its response and recovery capabilities. Bundaberg Regional Council is currently in discussions with Gladstone Regional Council to establish protocols should an event occur where residents of Gladstone Regional Council rely on support from Bundaberg. These protocols are necessary as Gladstone Regional Council is ultimately responsible for its residents at a Local Disaster Management level.

Fraser Coast Regional Council

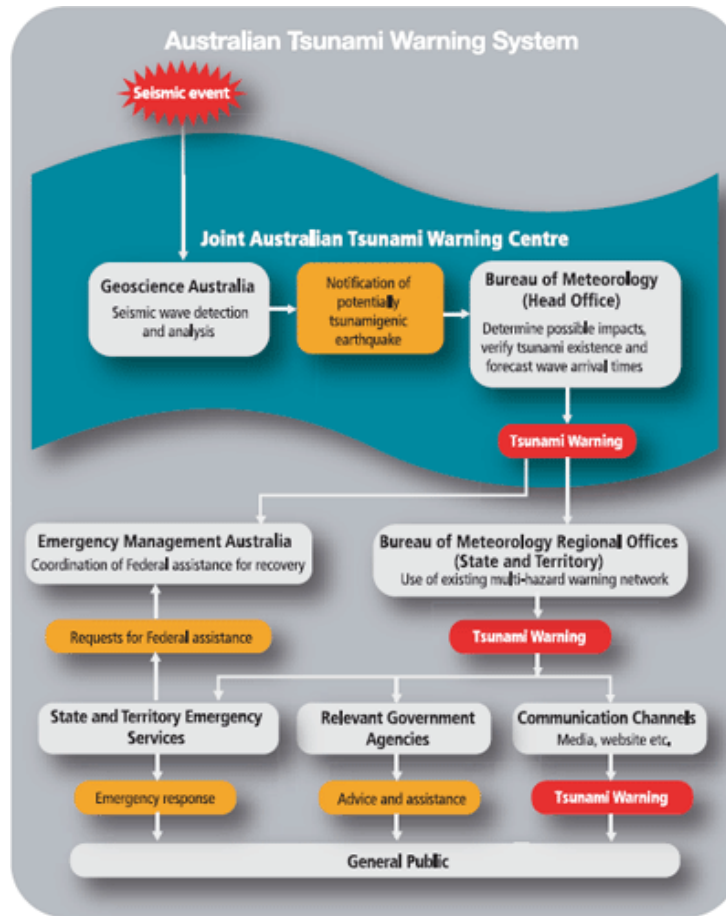
Bundaberg Regional Council's southern boundary with Fraser Coast Regional Council is the Burrum River. The town of Buxton and village of Walkers Point are on the northern side of the river in Bundaberg Regional Council. The town of Burrum Heads is on the southern side of the river and is in Fraser Coast Regional Council.

The Burrum River mouth is quite wide and there are no road connections between communities either side of the river other than travelling via the Bruce Highway, a distance of approximately 95kms taking approximately 1.45 hours.

It is unlikely that either Council would be able to provide assistance to communities on the opposite side of their coastal boundary.

Purpose

The purpose of this response plan is to articulate the tsunami specific preparedness, prevention and response arrangements for the tsunami threat to the Bundaberg Regional Council Local Disaster Management Group’s area of responsibility.



The Australian Tsunami Warning System

National tsunami warnings

The Joint Australian Tsunami Warning Centre (JATWC) was established to give Australia an independent warning capability of regional tsunami threats.

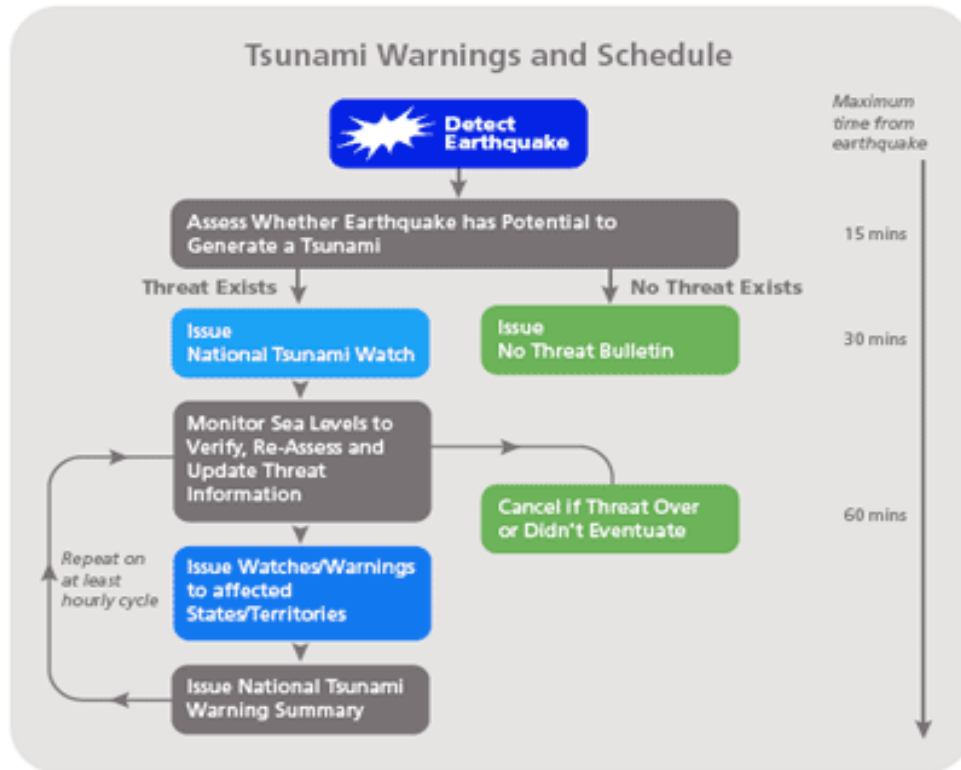
It is a virtual centre that includes Geoscience Australia (GA) in Canberra and the Australian Bureau of Meteorology (Bureau) in Melbourne.

The role of GA is seismic wave detection and analysis.

The role of the Bureau is to determine possible impacts, verify tsunami existence and forecast wave arrival times.

Note: The Pacific Tsunami Warning Centre, based in Hawaii, is no longer regarded as an authoritative source of tsunami warnings for Australia, although individuals can subscribe to its email warning service.

Sequence of watches and warnings



Tsunami Warnings and Schedule

Tsunami Warnings start with detection of an earthquake by GA. GA seismologists assess whether the earthquake has the potential to generate a tsunami and advise the Bureau of their findings. The Bureau completes the analysis and determines whether a threat exists to Australia or not.

If a threat does not exist then a No Threat Bulletin is issued to the Bureau's Regional Forecast Centres. If a threat does exist, then a National Tsunami Watch is similarly issued.

During the Watch phase, which lasts up to 30 minutes, further information-gathering and evaluation is conducted to update the threat assessment. This will result in state-focused Tsunami Warnings, if warranted, and a Cancellation once the threat is over or if it does not eventuate.

Tsunami warning products

National No Threat Bulletin: To advise people that the earthquake has been assessed and that no tsunami threat exists

National or State/Territory Watch: To advise people that a tsunami threat may exist and that they should look out for further updates

State/Territory Warning: To advise people that a tsunami threat does exist and to advise them of the level of threat and action they should take, i.e.:

Marine and immediate foreshore threat. Warning of potentially dangerous waves, strong ocean currents in the marine environment and the possibility of only some localised overflow onto the immediate foreshore.

Land inundation threat. Warning for low-lying coastal areas of major land inundation, flooding, dangerous waves and strong ocean currents.

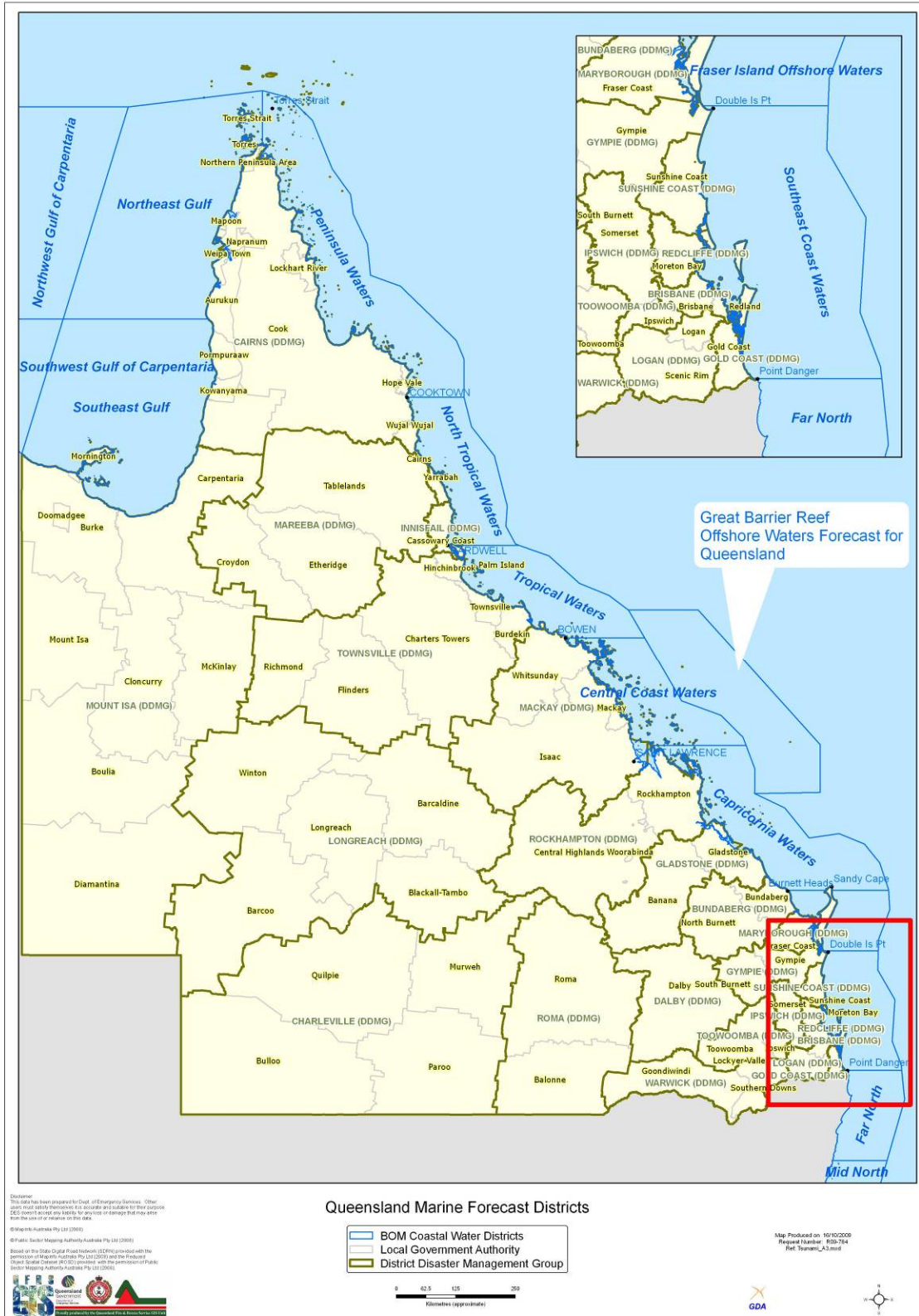
National Warning Summary: To provide the public, media and emergency authorities with the status of tsunami warnings nationally

Event Summary: To provide the public, media, emergency authorities and government with summary information that can be used in post-event analysis

JATWC warning products are issued to a range of government and non-government agencies including State and Territory Emergency Services, the media, and other agencies and individuals registered with their supporting Regional Forecast Centre.

JATWC uses conventional marine forecast districts to describe the areas likely to be affected by a tsunami, with the addition of an extra district, Great Barrier Reef offshore islands and reefs (the area surrounding Swains Reef), outside central Queensland coastal waters. These are shown in the diagram below.

The Bundaberg Regional Council coastline falls within the ‘Capricornia Waters’ district and the ‘Fraser Island Offshore Water’ district with Burnett Heads being the boundary between the two districts.



Marine Forecast Zones relevant to Queensland



Queensland's processes to manage JATWC warning products

Queensland's management of tsunami warnings is covered in the Queensland Tsunami Notification Protocol (QTNP), in agency plans and SOPs, and in DDMG and LDMG plans.

Warnings from the Bureau of Meteorology are issued directly to Queensland-based Commonwealth agencies such as Defence, Air Services Australia and airport authorities. The Bureau of Meteorology also issues warnings directly to the media, harbour-masters and any other registered subscriber.

The Department of Community Safety, through the State Disaster Coordination Centre receives all warnings on behalf of the Queensland Government. Warnings are disseminated to all Queensland Disaster Management Arrangement stakeholders by SMS, telephone and email.

References

Joint Australian Tsunami Warning Centre, www.bom.gov.au/tsunami

Emergency Management Queensland, www.emergency.qld.gov.au

Geoscience Australia, www.ga.gov.au

Queensland Tsunami Notification Protocol

Tsunami Risk Considerations

Tsunami potential consequences– vulnerable communities and infrastructure

The following table identifies those elements of the community vulnerable to tsunami based on the Bundaberg Regional Council area adopted height parameter, which is 6.0m AHD.

Elements within the Community	Exposure in Vulnerable Area*
<p>Estimated Population Total ; 19,130</p>	<p><u>Centre (Approx Population)</u> Colonial Cove Estate - Winfield (200) Winfield (100) Boaga (60) Moore Park Beach (2000) Skyringville (70) Bundaberg Port (1200) Burnett Heads (1500) Oaks Beach (1000) Bargara (6500) Innes Park North (800) Innes Park (1500) Coral Cove (2200) Elliott Heads (1500) Riverview (150) Coonarr (200) Woodgate Beach (900) Walkers Point (150) Buxton (300)</p>

Residential Dwellings ; Industrial; Commercial	<p>Appox 8700 dwellings (including units)</p> <p>Approx 40 industrial properties at Burnett Heads</p> <p>Approx 50 Commercial Properties at Bargara</p>
Caravan Parks ; Camping Grounds: National Parks	<p>Norville Park Camping grounds - 10 sites</p> <p>Miara - 156 sites</p> <p>Moore Park - 100 sites</p> <p>Burnett Heads - 59 sites</p> <p>Mon Repos - 100 sites</p> <p>Bargara (Nielsen Park) - 250 sites</p> <p>Elliott Heads - 120 sites</p> <p>Woodgate Beach – 250 sites</p> <p>National Parks – Unknown numbers of campers</p> <p>Burrum Coast National Park - Coonarr Section</p> <p>Burrum Coast National Park - Kinkuna Section</p> <p>Burrum Coast National Park - Woodgate Section</p>
Public Schools ; Private Schools; Childcare Centres	<p>Moore Park State School</p> <p>Burnett Heads State School</p> <p>Bargara State School</p> <p>Elliott Heads State School</p> <p>Coral Coast Community Kindergarten – Burnett Heads</p> <p>Coral Coast Child Care Centre</p>
Public Hospitals; Private Hospitals; Aged Care ; Nursing Home Facilities	<p>Carlyle Garden Retirement Village – 293 units</p>

Maritime	<p>Bundaberg Port Marina – 200 vessels</p> <p>Burnett Heads Marina – 70 vessels</p> <p>Bundaberg Port Sugar & General Cargo Terminal</p> <p>Burnett River Vessel Moorings</p>
----------	---

*Notes:

1. Vulnerable Area defined by: less than 6.0 metres Australian Height Datum (AHD).
2. Exposure likely to be dependant on nature of tsunami warning ie marine or land inundation.
3. This column identifies the number of people and names or locations of assets exposed for each element in the location.
4. Mitigation strategies are included in the main disaster management plan and the awareness and capacity building section of this sub plan
5. The list above does not take into account the communities north of Bundaberg Regional Council's boundary in Gladstone Regional Council Area that may rely on Bundaberg for assistance, support and recovery following an event.



Awareness and Capacity Building

Community education

The Bundaberg Regional Council has produced a map showing inundation areas below 6.0m AHD contour, and high ground land at 10.0m AHD. The map will be distributed to response agencies.

The Bundaberg Regional Council has an emergency management partnership with ABC Regional and Bundaberg Broadcasters Pty Ltd. Public information announcements will be made on relevant broadcast media regarding tsunami awareness.

Training and exercises

The Bundaberg Regional Council will undertake a number of desktop exercises with response agencies.

Community resilience measures

All buildings built since the late 1970's have been constructed with a cyclone rating and buildings prior to that date have been subject to cyclones. Provided buildings have been maintained correctly, the cyclone rating should provide some resilience to an inundation as a result of a tsunami. Furthermore, as the regional centre of Bundaberg is approximately 9km from the coastline, it has capacity to provide shelter to vulnerable communities provided sufficient warning is available.

Business continuity measures

The primary commercial, retail and industrial capacities of the region are located in the general boundaries of Bundaberg city and are unlikely to be impacted. Business services impacted by a tsunami event could be handled by businesses in Bundaberg in the short to medium term.



Response Strategy

The response phase of the Tsunami Response Plan commences with the receipt of a Tsunami Watch Bulletin or Tsunami Warning Bulletin. Evacuations will be initially voluntary and following a declaration can be mandatory following a decision by the Officer in Charge, Bundaberg Police District.

Any evacuations will occur following consultation between the District Disaster Management Group and the Local Disaster Management Group; and if the two groups cannot be convened, a decision on evacuation strategies will be determined between the District Disaster Coordinator and the Executive Officer, Local Disaster Management Group.

Following this, a notification of evacuations or possible preparations will be disseminated through response agencies such as Local State Emergency Service (if safe to do so) and via media alerts.

Warning notification and dissemination

In accordance with Queensland Tsunami Notification Protocol, the State Disaster Coordination Centre will directly disseminate tsunami warning products to State Government Departments, other State Disaster Coordination Group members, Emergency Management Queensland Regional Offices, and District Disaster Coordinators. Emergency Management Queensland Regional Offices disseminate tsunami warning products to their supported LDMGs. This is a complimentary message to the warnings received from the Bureau of Meteorology.

Bundaberg Regional Council LDMG Core Group members will be notified by SMS from the Bureau of Meteorology.

Bundaberg Regional Council LDMG will distribute information to vulnerable communities by contacting key people in the communities as shown below:-

LDMG Contact

Executive Officer

SES Controller

Community Contact

ABC Regional Program Manager

Station Manager, Bundaberg Broadcasters

South Kolan SES Group Leader

Yandaran SES Group Leader

Moore Park SES Group Leader

Burnett Heads SES Group Leader

Bargara SES Group Leader

Innes Park SES Group Leader

Elliott Heads SES Group Leader

Woodgate SES Group Leader



Manager Tourism	Council Caravan Parks & Camping Grounds
Area Director Rural Operations, Rural Fires, Qld Fire & Rescue Srvs	Rural Fire Services with jurisdiction in the inundation area
Council's Customer Service	Schools, Day Care Centres, Retirement Villages & Queensland Parks & Wildlife

Media Outlets for Emergency Purposes

- ABC Regional – Bundaberg (ABC National FM 100.9, ABC Regional FM 100.0, ABC Classic FM 98.5, Radio JJJ FM 99.3, ABC AM 855am and ABC Channel 2 Television) – **4155 4930**
- Bundaberg Broadcasters (Hitz FM – 93.9, Kix FM – 97.1, 4BU – 1332 AM) – **4153 0800**
- Macquarie Group (Sea FM – 93.1, Southern Cross 10 Television) – **4153 2533**
- Channel 7 Queensland – **4153 7377**
- WIN Television (Channel 9) – **4150 1799**
- Rebel FM (Wide Bay – 106.7) – **4181 1801**
- Coral Coast Community Radio (4BCR 94.7FM)- **4151 0947**
- Bundaberg Burnett 96.3fm Community Radio Assoc. Inc. (4DoubleB 96.3FM) – **4153 4963**
- Rhema FM 105.1 Wide Bay – **4124 2024**

Marine Forecast District

Bundaberg Regional Council coastline is potentially affected by bulletins specific to the following Marine Forecast Districts and areas:

Qld Marine Forecast Districts of Capricornia Waters & Fraser Island Off-shore Waters.

The following table illustrates the local governments within each Qld marine forecast district:

<i>Marine Forecast Districts</i>	<i>Local Governments</i>
<i>South East Gulf</i>	<i>Burke Shire Council Carpentaria Shire Council Kowanyama Aboriginal Shire Council Mornington Shire Council</i>
<i>North East Gulf</i>	<i>Torres Shire Council Pormpuraaw Aboriginal Shire Council Aurukun Shire Council Mapoon Aboriginal Shire Council Napranum Aboriginal Shire Council</i>
<i>Peninsular Waters</i>	<i>Cook Shire Council Lockhart River Aboriginal Shire Council Hope Vale Aboriginal Shire Council</i>
<i>North Tropical Waters</i>	<i>Cook Shire Council Cairns Regional Council Cassowary Coast Regional Council Yarrabah Aboriginal Shire Council</i>
<i>Tropical Waters</i>	<i>Cassowary Coast Regional Council Hinchinbrook Shire Council Townsville City Council Burdekin Shire Council Whitsunday Regional Council</i>
<i>Central Coast</i>	<i>Mackay Regional Council Whitsunday Regional Council</i>
<i>Capricornia Waters</i>	<i>Rockhampton Regional Council Gladstone Regional Council Bundaberg Regional Council</i>
<i>Marine Forecast Districts</i>	<i>Local Governments</i>
<i>Fraser Island Offshore Waters</i>	<i>Bundaberg Regional Council Fraser Coast Regional Council Gympie Regional Council</i>
<i>South East Coast Waters</i>	<i>Moreton Bay Regional Council Sunshine Coast Regional Council Brisbane City Council Redland City Council Gold Coast City Council</i>

The following table documents the agencies responsible for the dissemination of tsunami warnings to vulnerable elements of the community. It is the result of collaboration between agencies to ensure effective coverage of all vulnerable elements of the community.



It is expected that all vulnerable groups will receive notice of watch bulletins, warning bulletins and cancellation bulletins.

Vulnerable Groups	Agency primarily responsible for dissemination of warning*
<p><u><i>Vulnerable Groups to Consider</i></u></p> <p><i>Land Based Elements</i></p> <p><i>Domestic, Industry and Commercial buildings and residents</i></p> <p><i>Schools</i></p> <p><i>Coastal Parks and Reserves Users</i></p> <p><i>Beach and Foreshore Users ie swimmers, surfers, fishers, sunbathers, foreshore pedestrians</i></p> <p><i>Camping Areas/Caravan Parks</i></p> <p><i>Motorists</i></p> <p><i>Marine Based Elements</i></p> <p><i>Boats and Crew</i></p> <p><i>Other Marine Users – Divers, snorkelers, etc</i></p> <p><i>Port of Bundaberg & Marinas</i></p>	<p><u><i>Primary Agency Considerations</i></u></p> <p><i>LDMG</i></p> <p><i>Education Queensland</i></p> <p><i>Qld Parks & Wildlife</i></p> <p><i>Surf Lifesaving (Season / Weekend); VMR (Weekend)</i></p> <p><i>Bundaberg Regional Council</i></p> <p><i>Bundaberg District Office, Qld Department of Transport & Main Roads</i></p> <p><i>VMR</i></p> <p><i>VMR</i></p> <p><i>Manager Bundaberg Port (Gladstone Port Authority)</i></p>

Agency plans will include detailed contact registers to achieve dissemination of warnings.

Warning Methods

Warning messages will be disseminated by the most effective means allowing for factors such as time of day, season, infrastructure limitations, etc. *Methods that council have chosen to use may include:*

- Media – Radio and Television Broadcasts
- Door Knocking (QPS, SES & Rural Fires personnel)
- Telephone, Mobile, Fax – public alerting systems
- Internet
- Social networking systems (Facebook Twitter)
- Marine Radio and Distress Systems and Networks
- Mobile Public Address System
- Fixed Variable Message Signs
- Emergency Warning Network



Standard messages to the community

Wherever possible Tsunami Warnings should be disseminated verbatim. Where this is not possible or practicable due to delivery method or technological limitations, the following abbreviated message format should be used:

The Bureau of Meteorology has issued a <insert title of warning product> for this part of Queensland. Please call 1300TSUNAMI, that is 13008786264, or log onto www.bom.gov.au/tsunami for the full text of the message.

Any other proposed variation should be cleared through the Bureau of Meteorology prior to use.

Concept of operations for Response

The concept of operations to manage tsunami will predominantly be in accordance with the existing all hazard arrangements. This section of the Response Plan focuses on those aspects that have been modified to address the sudden onset nature of this hazard.

Roles and Responsibilities

Responsibility for the management of a tsunami event remains with the LDMG. The DDMG will support the LDMG in the management of a tsunami event.

The following table provides examples of roles and responsibilities.

Agency	Roles	Watch	Warning – Marine Inundation	Warning – Land Inundation
Bundaberg Regional Council LDMG	Prepare for critical asset protection in risk areas <ul style="list-style-type: none"> ○ Continuity of services ○ Post impact resource needs 	√		
	Prepare to close / evacuate beaches	√		
	Beach Closures / Evacuations		√	√
	Commence critical asset protection in risk areas		√	√
	Public communications – local preparedness and response	√	√	√
	Issuing of public information that compliments other warnings and targets local needs prior to during and post disaster impact events	√	√	√
	Supporting the dissemination of advice to the public regarding voluntary evacuations		√	√
	Supply of road signs			√
	Provide advice on mitigation options and assist in the coordination of suitable response		√	√
	Prepare for critical asset protection in risk areas	√		
	Commence critical asset protection from at risk areas			√
Ergon	Prepare for critical asset protection in risk areas	√		
	Commence critical asset protection from at risk areas		√	√
Mass Media	Dissemination of tsunami information and warnings	√	√	√
Queensland Ambulance Service	Prepare for critical asset protection in risk areas	√		

Agency	Roles	Watch	Warning – Marine Inundation	Warning – Land Inundation
Queensland Ambulance Service	Commence critical asset protection from at risk areas		√	√
	Preparation for use of QAS Station sites outside of impact zone for community support		√	√
Queensland Ambulance Service	Assistance with evacuations (persons with medical conditions)			√
	Provision of advice regarding medical special needs sectors of the community			√
Queensland Fire & Rescue	Prepare for critical asset protection in risk areas	√		
	Commence critical asset protection in risk areas			√
	Assistance with evacuations			√
Queensland Health	Prepare for potential influx of injured people	√		
	Commence preparation for triage			√
Queensland Police Service	Coordination of Evacuation Arrangements		√	√
	Liaison with Australian Federal Police		√	√
	Prepare for critical asset protection in risk areas	√		
	Commence critical asset protection in risk areas			√
	Doorknock vulnerable communities tasked by LDMG			√
State Emergency Services	Assist in conveying tsunami warnings as appropriate	√		

Agency	Roles	Watch	Warning – Marine Inundation	Warning – Land Inundation
State Emergency Services	Commence assisting the community with their tsunami response as appropriate			√
	Doorknock vulnerable communities tasked by LDMG			√
Telstra	Prepare for critical asset protection in risk area	√		
	Commence critical asset protection in risk area			√
Others	Responsibilities as required	√	√	√

Levels of activation

Tsunami Watch

LDMG

Executive Officer and Chairperson contacts LDMG core group members to confirm all are aware of watch. LDMG monitoring. Executive Officer liaises with the District Disaster Co-ordinator

Tsunami Warning

LDMG

Marine Inundation – Activate LDMG members. Marine Inundation warning operating procedures (from Table commencing on Page 19) implemented.

Land Inundation – Activate LDMG members. Land Inundation warning operating procedures (from Table commencing on Page 19) implemented.

Disaster declaration

It is expected that a disaster declaration will be signed for the affected area following the issue of a tsunami warning. The DDC may be requested by the Bundaberg Regional Council LDMG to make a declaration of a disaster situation should it be considered that



extra powers are required during the watch phase to ensure the movement of people away from the tsunami hazard i.e. evacuations, road closures, authority to enter a place, etc.

Evacuation

Existing evacuation plans will provide the basis for tsunami response planning. However the sudden onset nature of tsunami presents some unique constraints for evacuation planning.

The Bundaberg Regional Council LDMG expects people in the vulnerable zone to self evacuate based on the information given to them by the LDMG. The evacuation will be based on the Tsunami Risk and Evacuation Map.

Where people are not able to self evacuate, they should seek the assistance of neighbours, support agencies, relatives or friends. As a last resort, emergency services (QPS, QFRS, QAS and SES) will be asked to assist.

Special needs persons have been identified in other plans.

Agency plans

Agencies are expected to develop their own plans, which will be complementary to this plan.

Annexures

Annexures to this plan include, but are not limited to, the following:

- *Tsunami Risk and Evacuation Maps*